

Welcome Home

IT'S YOU. THROUGH & THROUGH.

Greenfield 
CABINETS

Cabinets: Full Access, Hancock A,
Paint Grade, Surfside
Design by (also featured on covers):
FMA Interior Design, Chicago, IL



FORM, MEET FUNCTION. FUNCTION, MEET FORM.

A MATCH MADE IN GREENFIELD HEAVEN.

Crafted for you, never pulled from a warehouse.
Richly finished, in just the colors you desire.



KITCHEN

Pages 4-43

BATH

Pages 44-63

MUDROOM & LAUNDRY ROOM

Pages 64-71

FAMILY ROOM & HOME OFFICE

Pages 72-83

OTHER SPACES

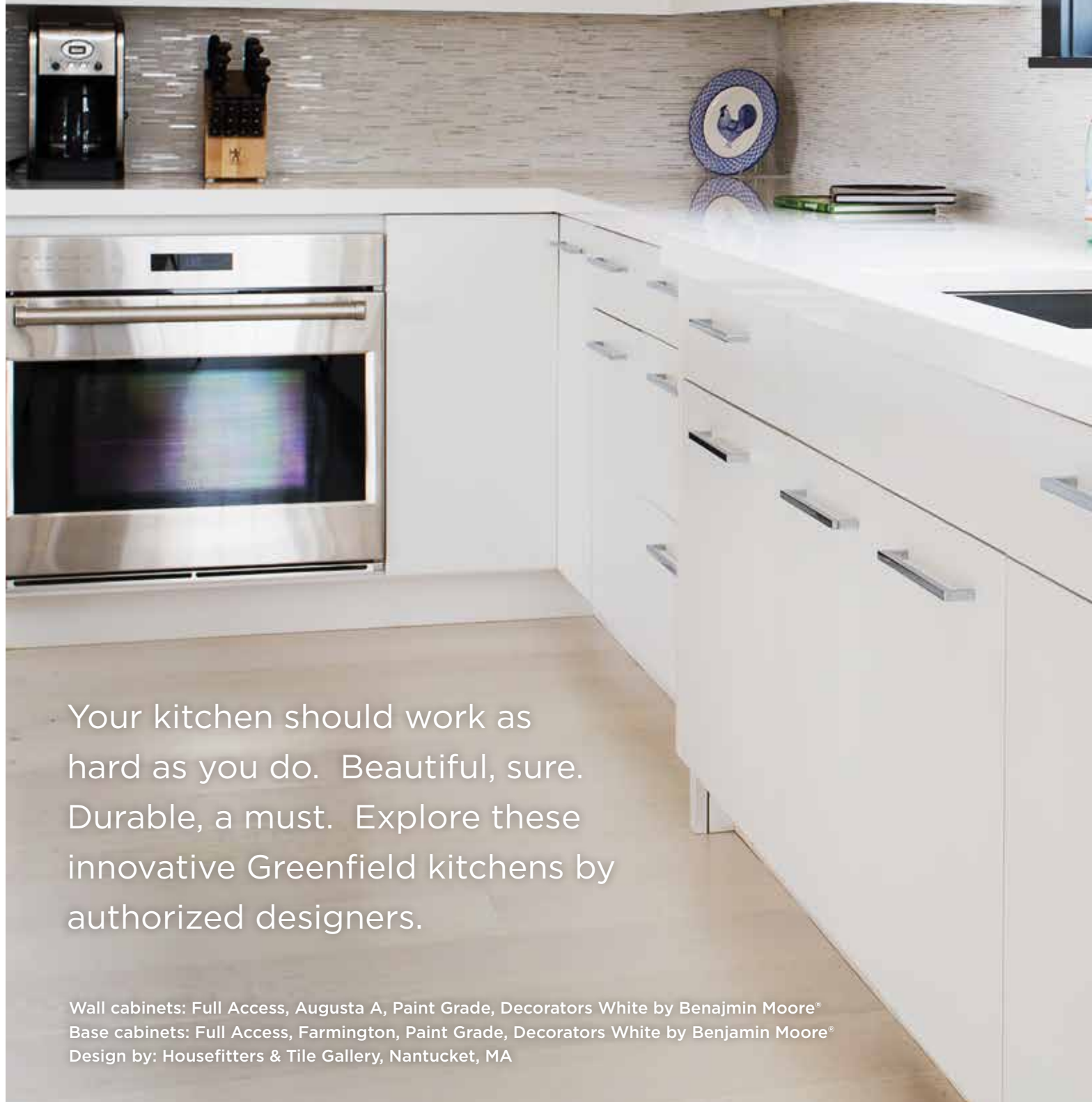
Pages 84-95

CREDIBILITY COUNTS.

Greenfield only engages with
kitchen & bath market leaders
to design and sell our cabinets.

Greenfield 
CABINETS

KITCHEN



Your kitchen should work as hard as you do. Beautiful, sure. Durable, a must. Explore these innovative Greenfield kitchens by authorized designers.

Wall cabinets: Full Access, Augusta A, Paint Grade, Decorators White by Benjamin Moore®
Base cabinets: Full Access, Farmington, Paint Grade, Decorators White by Benjamin Moore®
Design by: Housefitters & Tile Gallery, Nantucket, MA



PAINTED

Pages 6-21

STAINED

Pages 22-29

TWO-TONED

Pages 30-43

Cabinetry: Full Access, Farmington,
Paint Grade, Maxi Teal by Sherwin-Williams®
Design by: Design Group Three, Inc., Milwaukee, WI



Pages 6-21

KITCHEN | PAINTED

NATURAL AP



The images shown in this brochure are reasonably accurate. Please contact your Greenfield dealer to see actual samples.

PEAL

9



Cabinetry: Full Access, Augusta A, Paint Grade, Cameo
Design by: Kitchens Galore, Millbrae, CA



Dark

Wall cabinets: Beaded Inset, Augusta A,
Paint Grade, Inkwell by Sherwin-Williams®
Base cabinets and island: Full Access, Augusta A,
Paint Grade, Inkwell by Sherwin-Williams®
Design by: KitchenLab, LLC, Chicago, IL



but Never Dreary





Cabinetry: Beaded Inset, Dalton 275 A,
Paint Grade, Surfside
Design by: Housefitters & Tile Gallery,
Nantucket, MA



Midcentury Match

The images shown in this brochure are reasonably accurate. Please contact your Greenfield dealer to see actual samples.



Cabinetry: Full Access, Augusta A,
Paint Grade, Sealskin
Design by: KitchenLab, LLC, Chicago, IL

CLEAN SL



Wall cabinets: Full Access, Augusta A, Paint Grade, Decorators White by Benjamin Moore®
Base cabinets: Farmington, Paint Grade, Decorators White by Benjamin Moore®
Design by: Housefitters & Tile Gallery, Nantucket, MA

ATE





Calm, Cool and

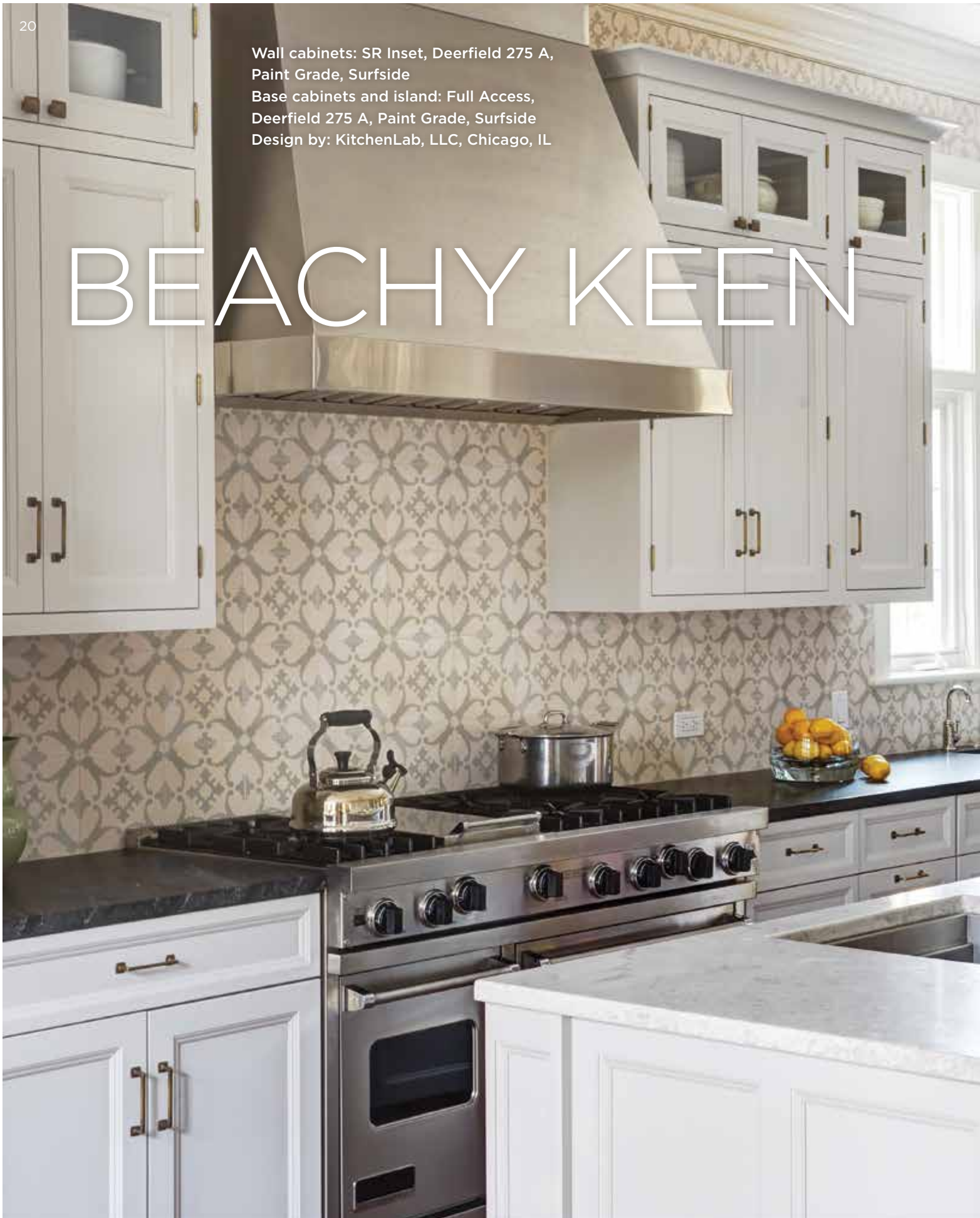


Collected

Cabinetry: Beaded Inset, Deerfield 275 D,
Glacier, Grey Glaze
Design by: C/S Design Studio, LLC, Fairfax, VA

Wall cabinets: SR Inset, Deerfield 275 A,
Paint Grade, Surfside
Base cabinets and island: Full Access,
Deerfield 275 A, Paint Grade, Surfside
Design by: KitchenLab, LLC, Chicago, IL

BEACHY KEEN





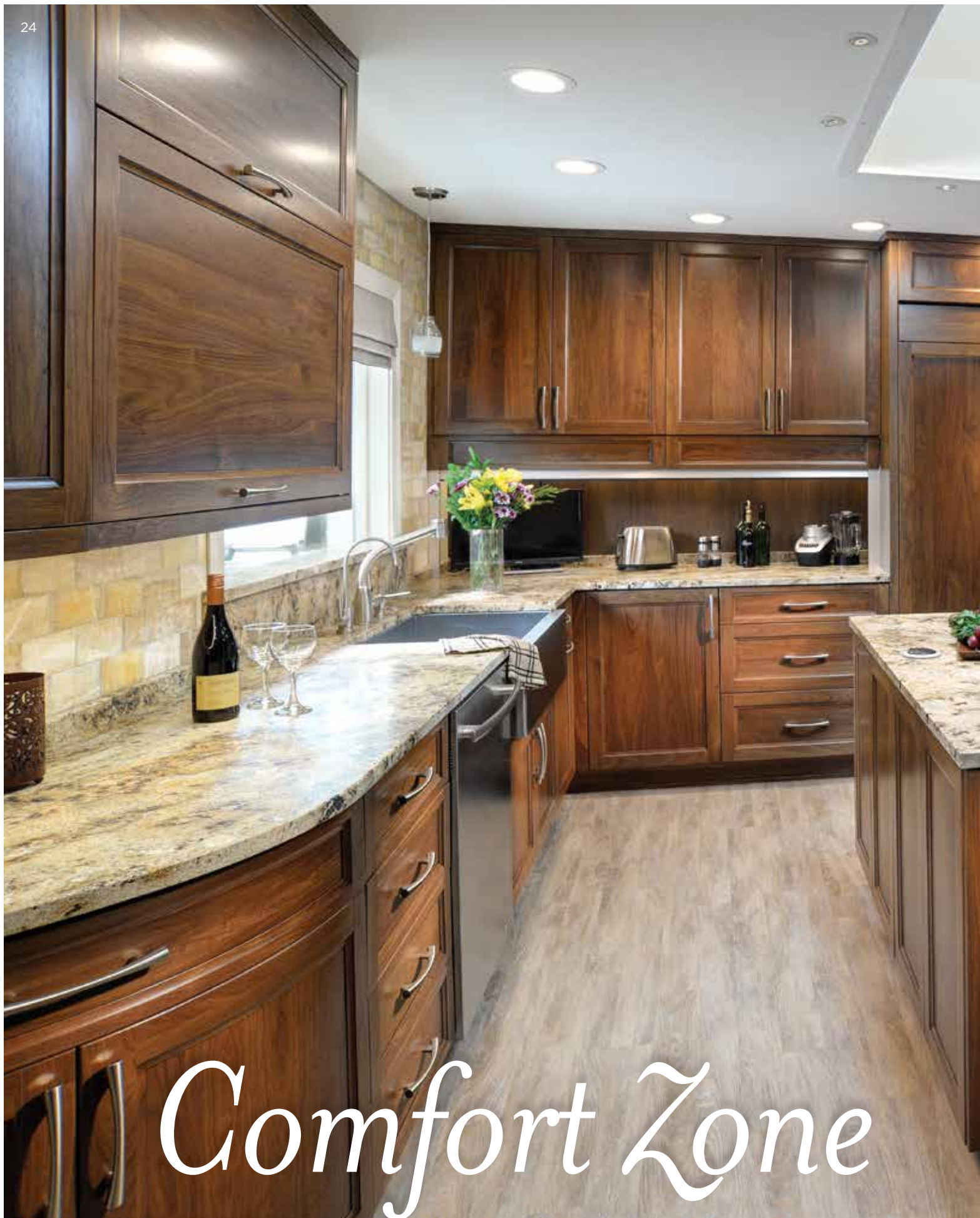


The images shown in this brochure are reasonably accurate. Please contact your Greenfield dealer to see actual samples.

Pages 22-29

KITCHEN | STAINED

Cabinetry: Full Access, Custom Door, Quarter Sawn White Oak, Custom Stain
Design by: Dimon Designs, Mundelein, IL



Comfort Zone



Cabinetry: Full Access, Whitman 275 A,
Walnut, Custom Stain, Black Glaze
Design by: The Corsi Group, Indianapolis, IN





Perimeter: Full Access, Custom Door, Quarter Sawn White Oak, Natural, Limed
Island: Full Access, Ashbourne 231 A, Quarter Sawn White Oak, Natural, Limed
Design by: Housefitters & Tile Gallery, Nantucket, MA

CHIC

MODERN MA



Cabinetry: Full Access, Estridge, Comp Qtr Walnut, Natural
Design by: FMA Interior Design, Chicago, IL








Pages 30-43

KITCHEN | TWO-TONED

Wall cabinets: Full Access, Augusta A, Alder, Fawn, Brown Glaze
Base cabinets: Full Access, Farmington, Jack Pine by Benjamin Moore®
Design by: Bluestem Construction, St. Louis Park, MN



MAD ABOUT MODERN



Wall and tall cabinets: Full Access, Estridge, Sequence Flat Cut Cherry, Custom Stain
Base cabinets: Full Access, Estridge, Sequence Flat Cut Cherry, Timber
Design by: Bluestem Construction, St. Louis Park, MN



Picture Perfect

Perimeter: Full Access, Jackson A, Paint Grade, Sealskin
Island: Full Access, Jackson A, Paint Grade, Pewter
Wet bar: Full Access, Jackson A, Paint Grade, Eucalyptus
Design by: Kregel & Hood, LLC, Chicago, IL



Pure and Simple

The images shown in this brochure are reasonably accurate. Please contact your Greenfield dealer to see actual samples.



Perimeter: Full Access, Eastlake A, Paint Grade, Surfside
Island: Full Access, Eastlake A, Paint Grade, Hale Navy by Benjamin Moore®
Design by: New Perspective Cabinetry and Design, LLC, Westport, CT

INDUSTRIAL





Perimeter: Modern Overlay, Kennett, Alder, Coastal
Island: Modern Overlay, Kennett, Quarter Sawn White Oak, Barnwood, Limed
Design by: FMA Interior Design, Chicago, IL



Time Honored



Perimeter: ER Inset, Catalina 275 A, Paint Grade, Surfside
Island and hutch: ER Inset, Catalina 275 A, Walnut, Custom Stain
Design by: Dove Design Studio, Short Hills, NJ



COZY CORNER

The images shown in this brochure are reasonably accurate. Please contact your Greenfield dealer to see actual samples.



Base Cabinets: Full Access, Augusta A, Paint Grade, Maxi Teal by Sherwin-Williams®
Design by: Kitchens Galore, Milbrae, CA



BATH

Your bath should be an oasis.
Our baths are exactly that.

Cabinetry: Full Access, Estridge, Sequence Flat Cut Walnut, Natural
Design by: Kitchens Galore, Millbrae, CA



PAINTED

Pages 46-57

STAINED

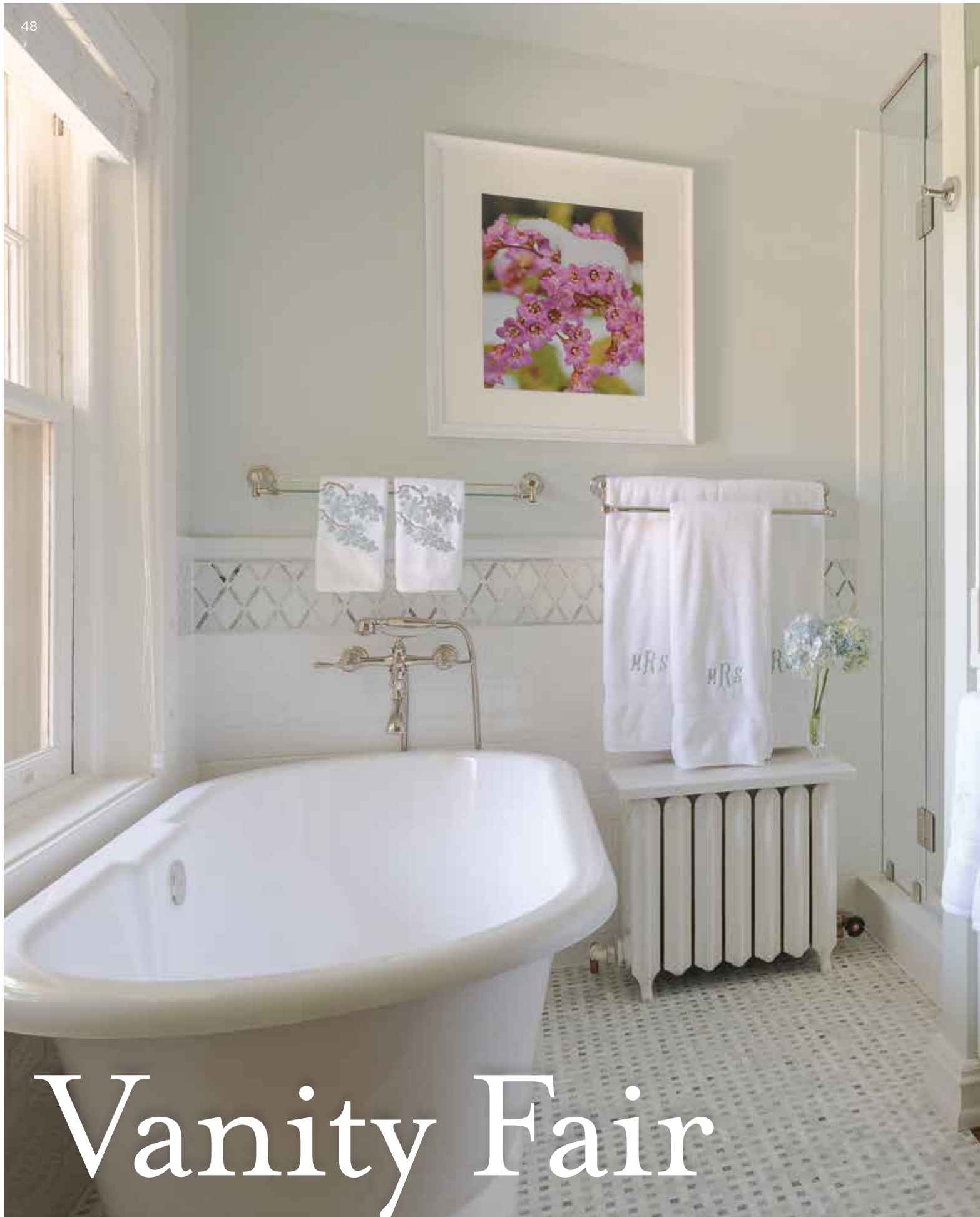
Pages 58-63



BATH | PAINTED

Pages 46-57

Wall cabinets: ER Inset, Frame: Paint Grade, Cameo, Doors: Ashbourne 231/Louver, Soot by Benjamin Moore®
Base cabinets: Full Access, Ashbourne 231/Louver, Soot by Benjamin Moore®
Design by: Kitchens Galore, Millbrae, CA



Vanity Fair

The images shown in this brochure are reasonably accurate. Please contact your Greenfield dealer to see actual samples.



Cabinetry: Beaded Inset, Catalina 275 A, Paint Grade, Glacier
Design by: Classic Homeworks, Denver, CO

Bath Bliss





Cabinetry: SR Inset, Jamestown 231 H,
Paint Grade, Verbena, Black Glaze
Design by: Classic Homeworks, Denver, CO



A Study in Style



Cabinetry: Full Access, Kinnear 275 A, Paint Grade, Kendall Charcoal by Benjamin Moore®
Design by: Studio Swann, LLC, Chicago, IL

SMALL WONDER



Cabinetry: Full Access, Augusta A,
Paint Grade, Glacier
Design by: Studio Swann, LLC, Chicago, IL

Bubblicious

Cabinetry: Full Access, Jamestown 300 H, Paint Grade,
Blue Dolphin, Black Glaze by PPG Porter Paints®
Design by: The Corsi Group, Indianapolis, IN





Station

Cabinetry: Full Access, Hancock A, Paint Grade, Gauntlet
Design by: FMA Interior Design, Chicago, IL



BATH | STAINED

Pages 58-63

Cabinetry: Full Access, Larchmont A, Alder, Clove
Design by: Dimon Designs, Mundelein, IL



Cabinetry: Full Access, Estridge, Sequence Flat Cut Cherry, Timber
Design by: Bluestem Construction, St. Louis Park, MN



FASHION FORWARD





Cabinetry: Full Access, Estridge,
Comp Qtr Walnut, Natural
Design by: Kitchens Galore,
Millbrae, CA

Pages 64-71

MUDROOM & LAUNDRY ROOM

These may be the most design-neglected rooms of the home. Let's not let that happen to your home.



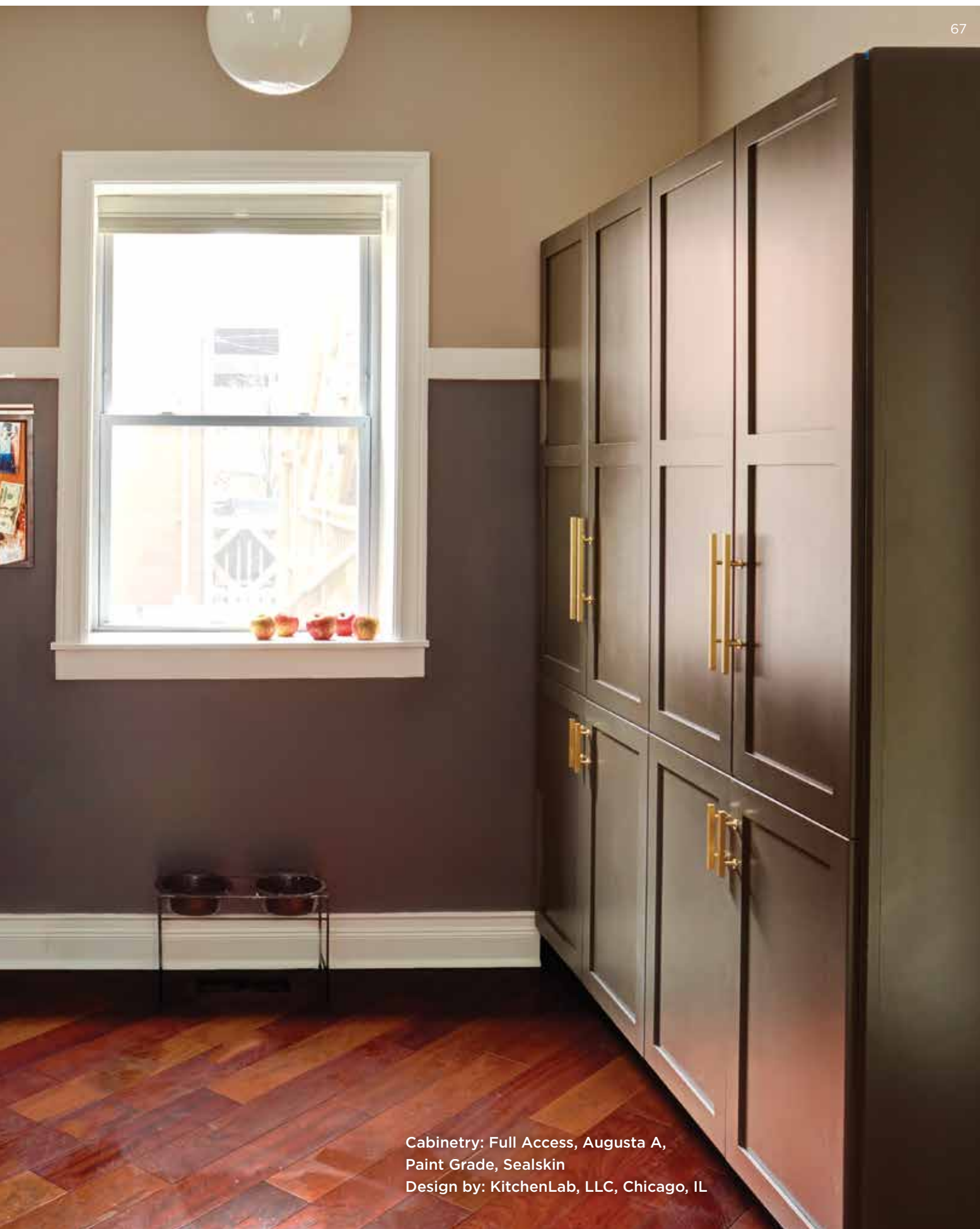
DM



Cabinetry: SR Inset Jamestown 231 H,
Paint Grade, Black
Design by: Classic Homeworks, Denver, CO



A Place for Everything



Cabinetry: Full Access, Augusta A,
Paint Grade, Sealskin
Design by: KitchenLab, LLC, Chicago, IL

Laundry Luxe



Cabinetry: Full Access, Jackson A,
Paint Grade, Cityscape
Design by: Laurie Trinch Interiors, Bloomfield, MI

BASE CAMP

Cabinetry: Full Access, Farmington, Paint Grade,
Maxi Teal by Sherwin-Williams®
Design by: Design Group Three, Inc., Milwaukee, WI

LAUNDRY



Cabinetry: Full Access, Jackson A, Paint Grade, Cameo
Design by: Kitchens Galore, Millbrae, CA

DAY HAPPY DAY



FAMILY ROOM & HOME OFFICE

Family time or work time,
it's always time for a custom fit space.

PAINTED

Pages 74-79

STAINED

Pages 80-83

Desk: Full Access Door style: Sequence Flat Cut Walnut Natural, Estridge
Paneling: Textured European Oak, Custom Stain, Limed, Alder, Federal
Design by: The Corsi Group, Indianapolis, IN





FAMILY ROOM & HOME OFFICE | PAINTED

Pages 74-79

Cabinetry: Beaded Inset, Dalton 275 A, Paint Grade, Surfside
Design by: Housefitters & Tile Gallery, Nantucket, MA

HOMEWORK



Cabinetry: Full Access, Farmington, Paint Grade, Cameo
Design by: Kitchens Galore, Millbrae, CA

ORK HUB

77



Cabinetry: Beaded Inset, Dalton 275 A, Paint Grade, Surfside
Design by: Housefitters & Tile Gallery, Nantucket, MA



Book Nooks

The images shown in this brochure are reasonably accurate. Please contact your Greenfield dealer to see actual samples.





FAMILY ROOM & HOME OFFICE | STAINED

Pages 80-83



Cabinetry: Full Access, Estridge,
Sequence Flat Cut Cherry, Timber
Design by: Bluestem Construction,
St. Louis Park, MN

Modern Family



Cabinetry: ER Inset, Catalina 275 A, Walnut, Custom Stain
Design by: Dove Design Studio, Short Hills, NJ



PAINTED

Pages 86-91

STAINED

Pages 92-95

XO

OTHER SPACES

Don't overlook these important spaces.
Custom cabinets complete the look.



Tall post: Full Access, Estridge, Sequence Flat Cut Cherry, Custom Stain
Base cabinets: Full Access, Estridge, Sequence Flat Cut Cherry, Timber
Design by: Bluestem Construction, St. Louis Park, MN

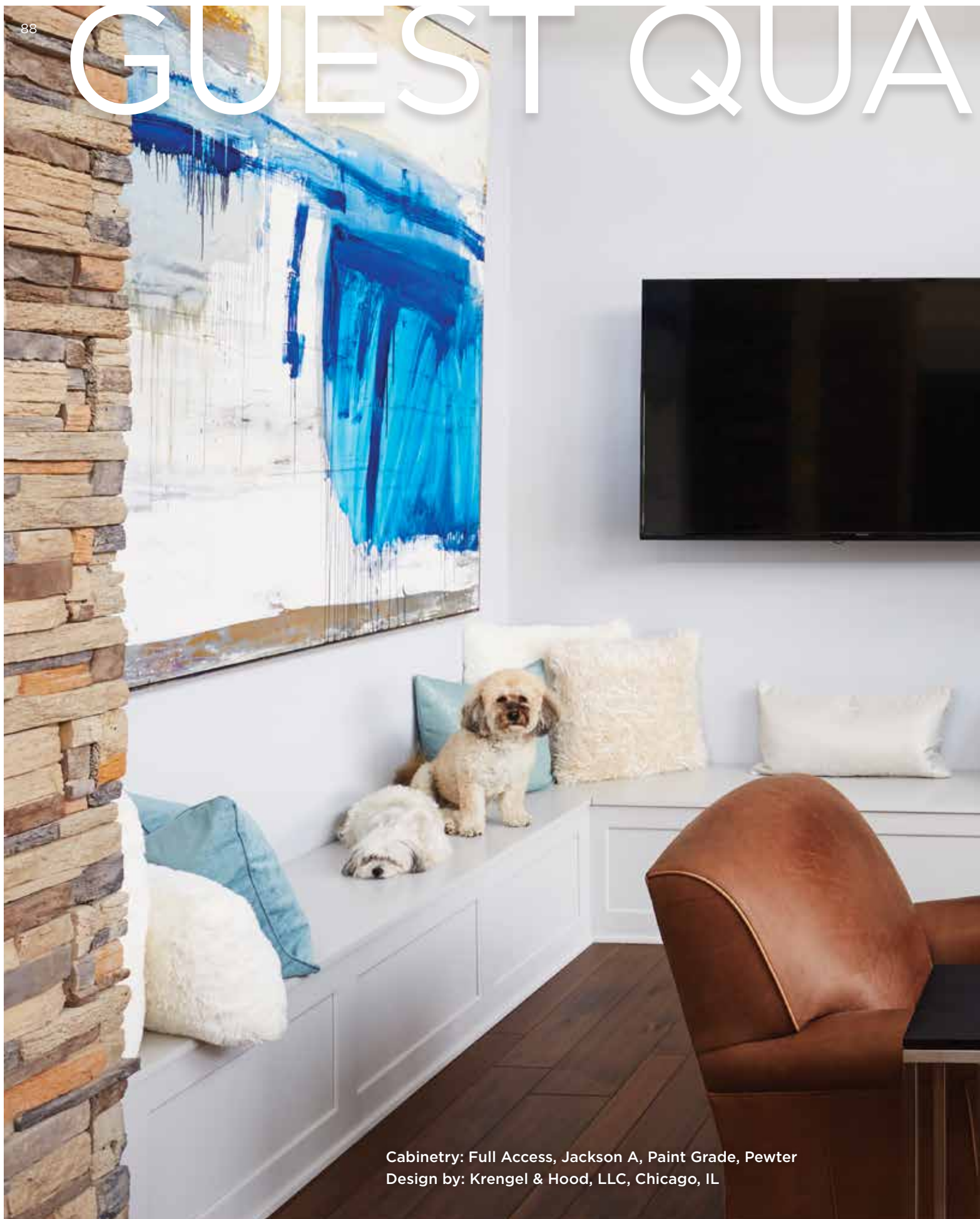
Cabinetry: Beaded Inset, Augusta A,
Paint Grade, Inkwell by Sherwin-Williams®
Design by: KitchenLab, LLC, Chicago, IL

OTHER SPACES | PAINTED

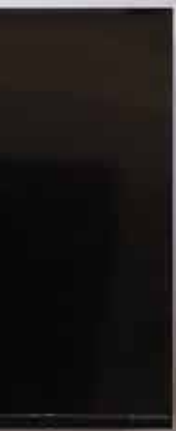
Pages 86-91



GUEST QUARTERS



Cabinetry: Full Access, Jackson A, Paint Grade, Pewter
Design by: Krengel & Hood, LLC, Chicago, IL





American Beauty



Cabinetry: SR Inset, Jackson A, Paint Grade, Cameo
Design by: Studio Swann, LLC, Chicago, IL

OTHER SPACES | STAINED

Pages 92-95

Cabinetry: Full Access, Fremont 300 A,
Quarter Sawn White Oak, Barnwood, Lined
Design by: Studio Swann, LLC, Chicago, IL







Cabinetry: SR Inset, Jamestown 231 H,
Quarter Sawn White Oak, Cabernet, Black Glaze
Design by: Classic Homeworks, Denver, CO





Welcome Home

Our cabinets are proudly made in West Virginia and Indiana.

Greenfield cabinetmakers have that special blend of old world attention to detail, combined with modern technical expertise. It's the best of both worlds.

For more information, visit GreenfieldCabinetry.com.

Greenfield 
C A B I N E T R Y

To avoid dimensional changes in or damage to components of finished wood cabinetry, we recommend maintaining your environment between 25% and 50% relative humidity and a temperature range of 40 to 100 degrees.

Benjamin Moore® is a registered trademark of Benjamin Moore & Co.
Sherwin-Williams® is a registered trademark of Sherwin-Williams.